

Single N-Channel MOSFET

DESCRIPTION

SMC7002E is the N-Channel enhancement mode power field effect transistors are using trench technology. This advanced trench technology devices are well suited for high efficiency fast switching applications, low in-line power loss needed in small outline surface mount package.

PART NUMBER INFORMATION

SMC 7002 E SN - TR G
 a b c d e f

- a : Company name.
- b : Product Serial number.
- c : ESD Protection
- d : Package code SN: SOT-23
- e : Handling code TR: Tape&Reel
- f : Green produce code G: *RoHS Compliant*

FEATURES

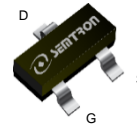
$V_{DS}=60V, I_D=0.4A$

$R_{DS(ON)}=1.2\Omega(Typ.)@V_{GS}=10V$
 $R_{DS(ON)}=1.8\Omega(Typ.)@V_{GS}=4.5V$

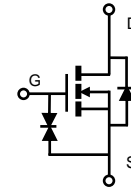
- ◆ Fast switch
- ◆ ESD Protection

APPLICATIONS

- ◆ Hand-Held Instruments
- ◆ Analog Switching Application.



SOT-23



ABSOLUTE MAXIMUM RATINGS ($T_A = 25^\circ C$ Unless otherwise noted)

Symbol	Parameter	Rating	Units
V_{DSS}	Drain-Source Voltage	60	V
V_{GSS}	Gate-Source Voltage	± 20	V
I_D	Continuous Drain Current ^A	$T_A=25^\circ C$	0.4
		$T_A=70^\circ C$	0.33
I_{DM}	Pulsed Drain Current ^B	1.2	A
P_D	Power Dissipation ^A	$T_A=25^\circ C$	0.83
		$T_A=70^\circ C$	0.53
T_J	Operation Junction Temperature	-55/150	$^\circ C$
T_{STG}	Storage Temperature Range	-55/150	$^\circ C$

THERMAL RESISTANCE

Symbol	Parameter	Typ	Max	Units
$R_{\theta JA}$	Thermal Resistance Junction to Ambient ^a		150	$^\circ C/W$

ELECTRICAL CHARACTERISTICS ($T_A = 25^\circ\text{C}$ Unless otherwise noted)

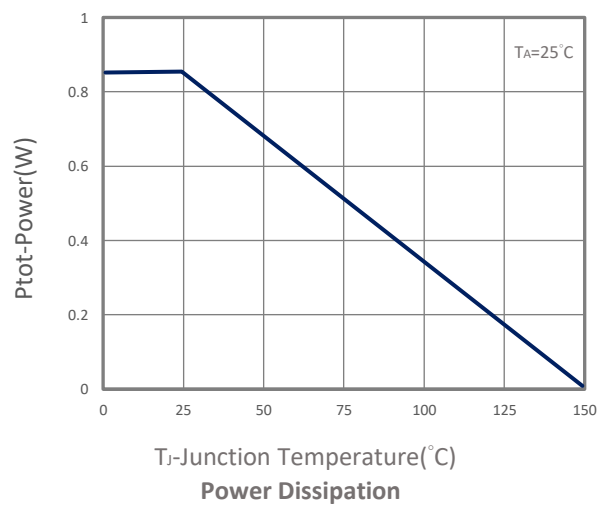
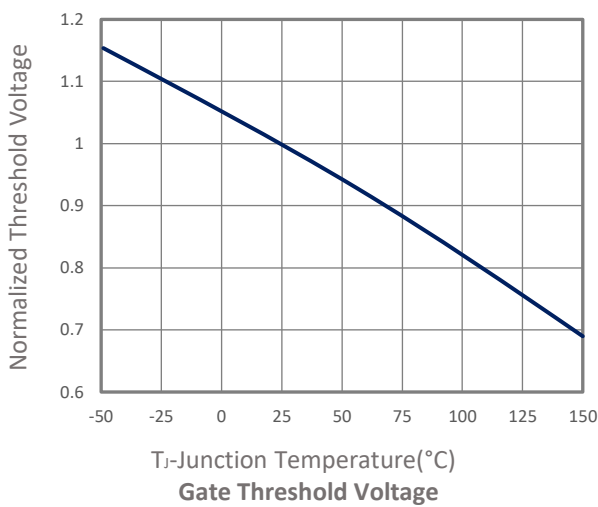
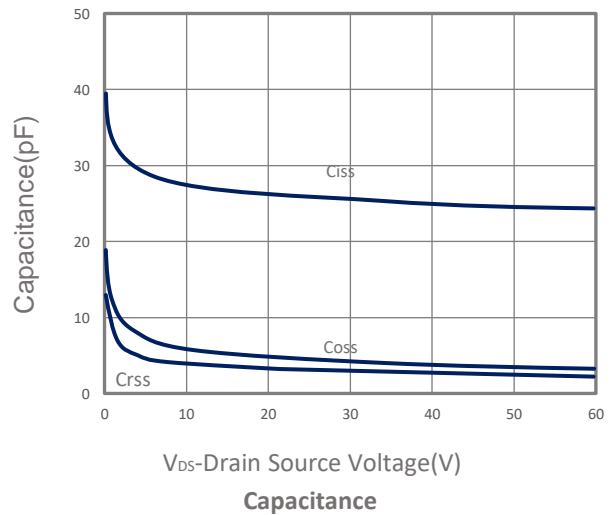
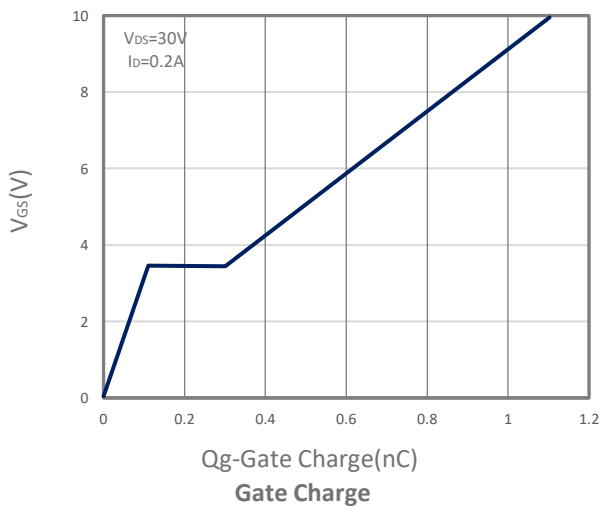
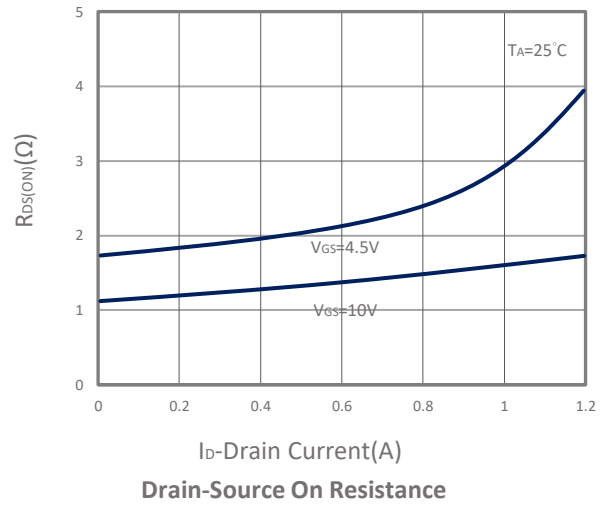
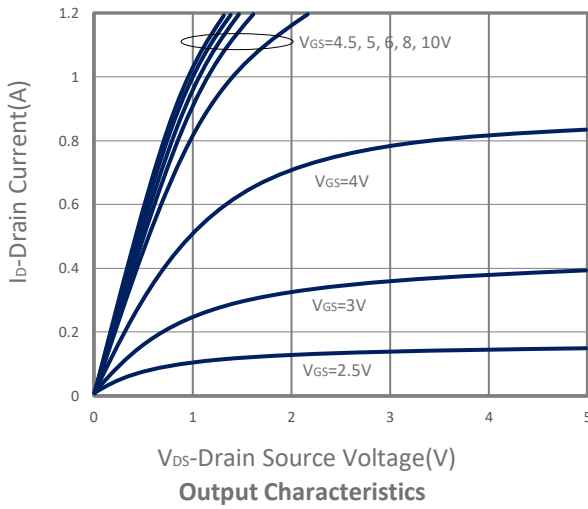
Symbol	Parameter	Condition	Min	Typ	Max	Unit
Static Parameters						
BV _{DSS}	Drain-Source Breakdown Voltage	V _{GS} =0V, I _D =250 μ A	60			V
V _{GS(th)}	Gate Threshold Voltage	V _{DS} =V _{GS} , I _D =250 μ A	1	1.6	2.5	V
I _{GSS}	Gate Leakage Current	V _{DS} =0V, V _{GS} = \pm 20V			\pm 10	μ A
I _{DSS}	Zero Gate Voltage Drain Current	V _{DS} =60V, V _{GS} =0V, T _J =25 $^\circ$ C			1	μ A
		V _{DS} =48V, V _{GS} =0V, T _J =85 $^\circ$ C			10	
R _{DS(ON)}	Drain-source On-Resistance ^D	V _{GS} =10V, I _D =0.4A		1.2	1.6	Ω
		V _{GS} =4.5V, I _D =0.2A		1.8	3	
Diode Characteristics						
V _{SD}	Diode Forward Voltage ^D	I _S =0.2A, V _{GS} =0V			1	V
I _S	Diode Continuous Forward Current ^A				0.4	A
Dynamic and Switching Parameters^E						
Q _g	Total Gate Charge	V _{DS} =30V, V _{GS} =10V, I _D =0.2A		1.1		nC
Q _{gs}	Gate-Source Charge			0.1		
Q _{gd}	Gate-Drain Charge			0.2		
C _{iss}	Input Capacitance	V _{DS} =25V, V _{GS} =0V, f=1MHz		27		pF
C _{oss}	Output Capacitance			5.8		
C _{rss}	Reverse Transfer Capacitance			3		
t _{d(on)}	Turn-On Time	V _{DD} =30V, V _{GEN} =10V, R _G =10 Ω , I _D =0.2A		2.95	6	nS
t _r				4	8	
t _{d(off)}	Turn-Off Time			11	21	
t _f				8	15	

Note: Absolute maximum ratings are those values beyond which the device could be permanently damaged.

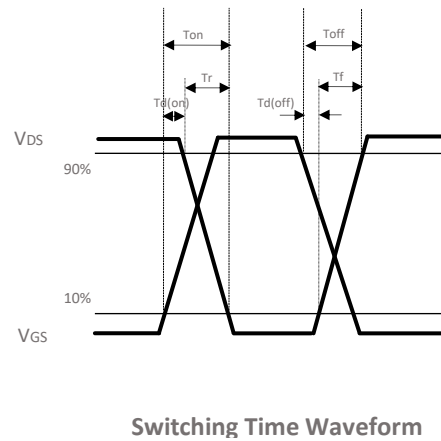
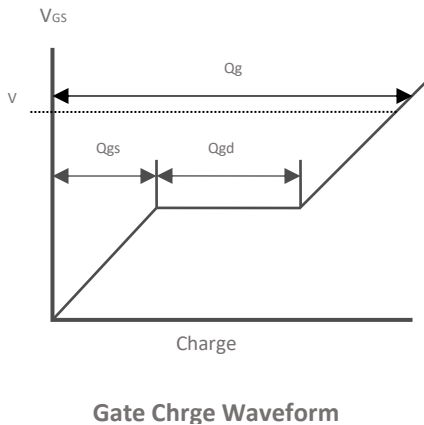
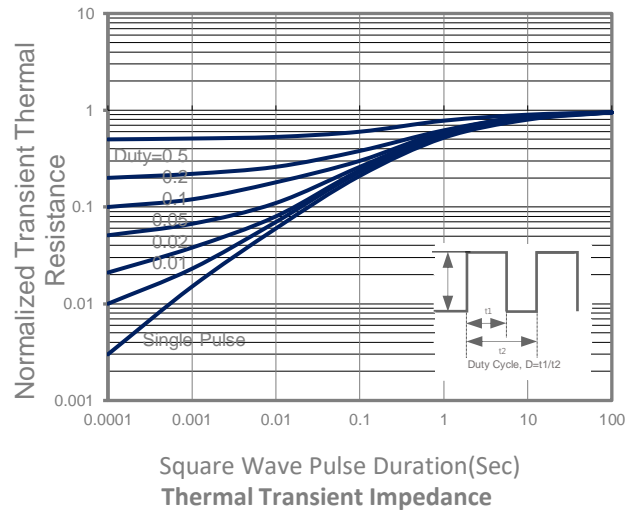
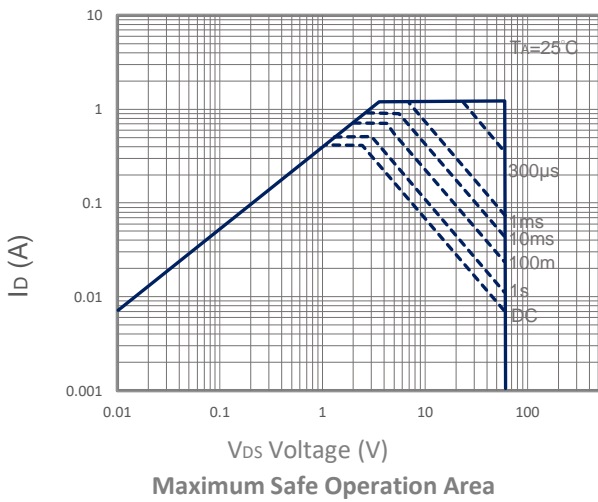
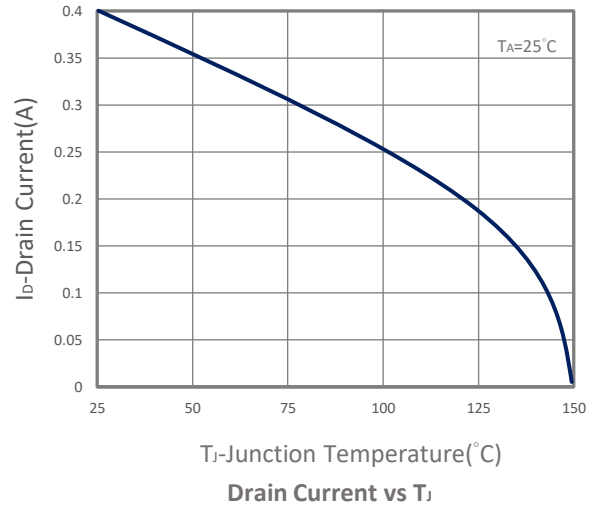
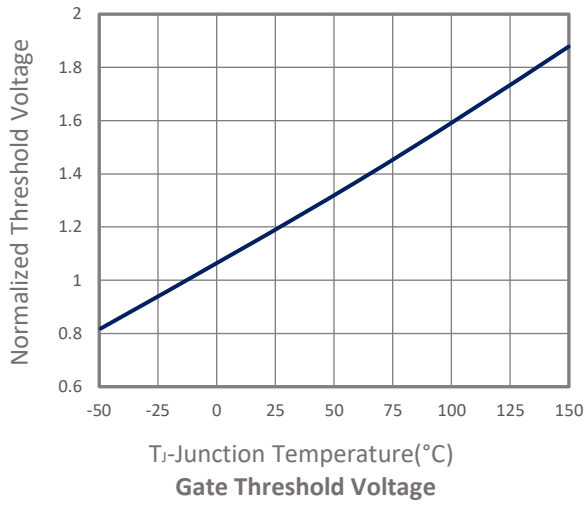
- A. Surface mounted on FR4 board using 1 in sq pad size
- B. Pulsed width limited by maximum junction temperature, T_{J(MAX)}=150 $^\circ$ C.
- C. Using \leq 10s junction-to-ambient thermal resistance is base on T_{J(MAX)}=150 $^\circ$ C.
- D. Pulse test width \leq 300 μ s and duty cycle \leq 2%.
- E. Guaranteed by design, not subject to production testing.

The products and product specifications contained herein are subject to change without notice to improve performance characteristics. Consult us, or our representatives before use, to confirm that the information in this datasheet is up to date. We assume no responsibility for any infringement of patents, patent rights, or other rights arising from the use of any information and circuitry in this datasheet.

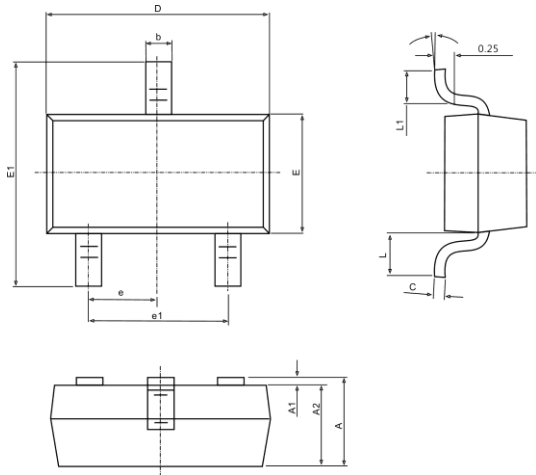
TYPICAL CHARACTERISTICS



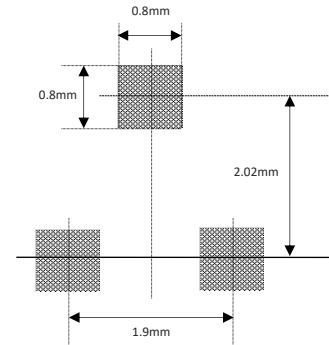
TYPICAL CHARACTERISTICS



■ SOT-23 PACKAGE DIMENSIONS



Recommended Land Pattern



Symbol	Dimensions In Millimeters		Dimensions In Inches	
	Min.	Max.	Min.	Max.
A	0.900	1.150	0.035	0.045
A1	0.000	0.100	0.000	0.004
A2	0.900	1.050	0.035	0.041
b	0.300	0.500	0.012	0.020
c	0.080	0.150	0.003	0.006
D	2.800	3.000	0.110	0.118
E	1.200	1.400	0.047	0.055
E1	2.250	2.550	0.089	0.100
e	0.950 TYP.		0.037 TYP	
e1	1.800	2.000	0.071	0.079
L	0.550 REF.		0.022 REF.	
L1	0.300	0.500	0.012	0.020
θ	0°	8°	0°	8°