

Dual P-Channel MOSFET

DESCRIPTION

SMC4953A is the Dual P-Channel enhancement mode power field effect transistors are using trench DMOS technology. This advanced technology has been especially tailored to minimize on-state resistance. This device is ideal for load switch applications.

PART NUMBER INFORMATION

SMC **4953A** **M** - **TR** **G**
 a b c d e

- a : Company name.
- b : Product Serial number.
- c : Package code M: SOP-8
- d : Handling code TR: Tape & Reel
- e : Green produce code G: *RoHS Compliant*

FEATURES

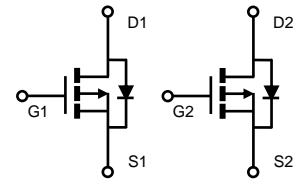
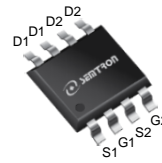
$V_{DS} = -30V$, $I_D = -5A$

$R_{DS(ON)} = 46m\Omega (Typ.) @ V_{GS} = -10V$
 $R_{DS(ON)} = 65m\Omega (Typ.) @ V_{GS} = -4.5V$

- ◆ Fast switch
- ◆ High power and current handling capability

APPLICATIONS

- ◆ DC-DC Power System
- ◆ Load Switch



SOP-8

ABSOLUTE MAXIMUM RATINGS ($T_A = 25^\circ C$ Unless otherwise noted)

Symbol	Parameter	Rating	Units
V_{DSS}	Drain-Source Voltage	-30	V
V_{GSS}	Gate-Source Voltage	± 20	V
I_D	Continuous Drain Current	$T_A = 25^\circ C$	-5
		$T_A = 70^\circ C$	-4
I_{DM}	Pulsed Drain Current ^A	-20	A
P_D	Power Dissipation ^B	$T_A = 25^\circ C$	2
		$T_A = 70^\circ C$	1.3
T_J	Operation Junction Temperature	-55/150	$^\circ C$
T_{STG}	Storage Temperature Range	-55/150	$^\circ C$

THERMAL RESISTANCE

Symbol	Parameter	Typ	Max	Units
$R_{\theta JA}$	Thermal Resistance Junction to Ambient ^B	$t \leq 10s$	62	$^\circ C/W$
	Thermal Resistance Junction to Ambient ^{BC}	Steady-State	110	
$R_{\theta JC}$	Thermal Resistance Junction to Case		45	

ELECTRICAL CHARACTERISTICS ($T_A = 25^\circ\text{C}$ Unless otherwise noted)

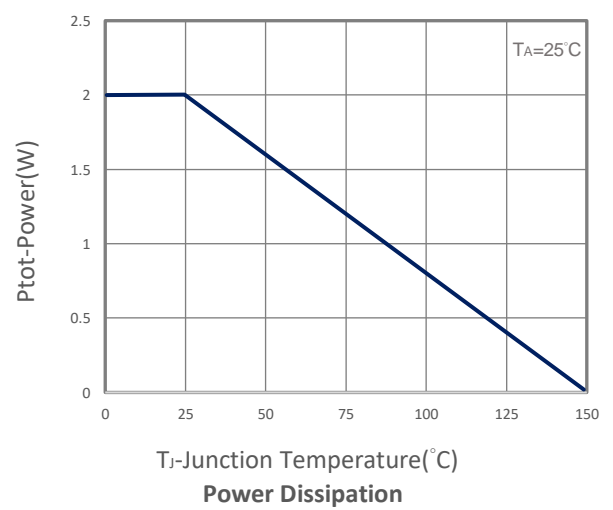
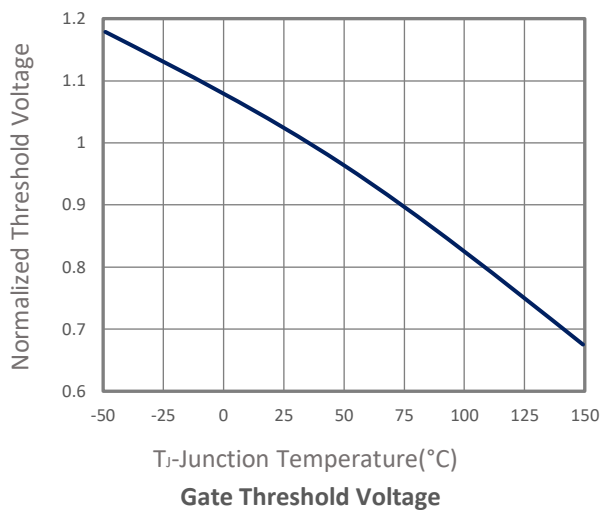
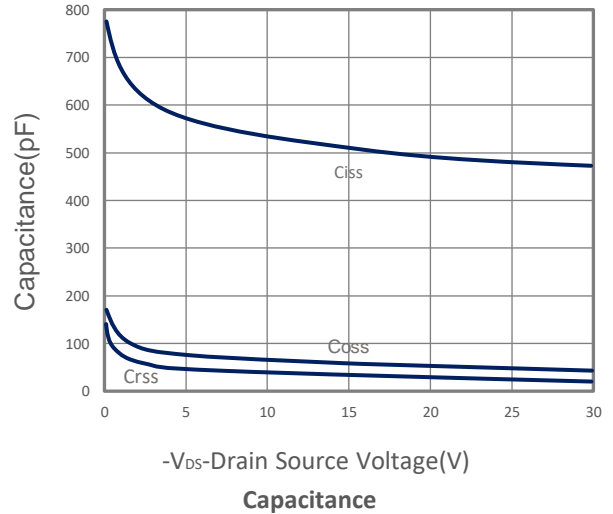
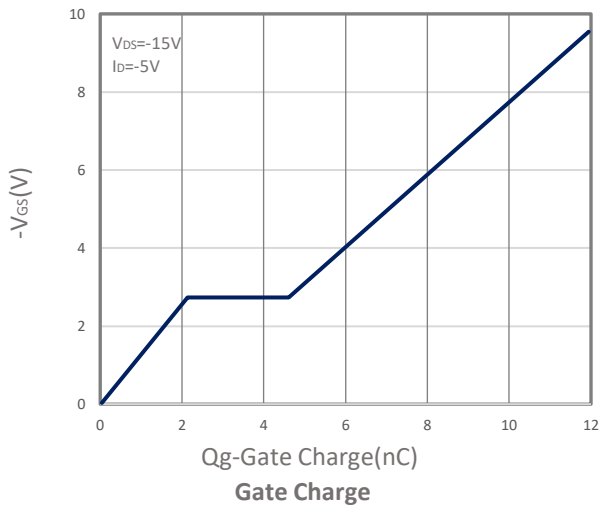
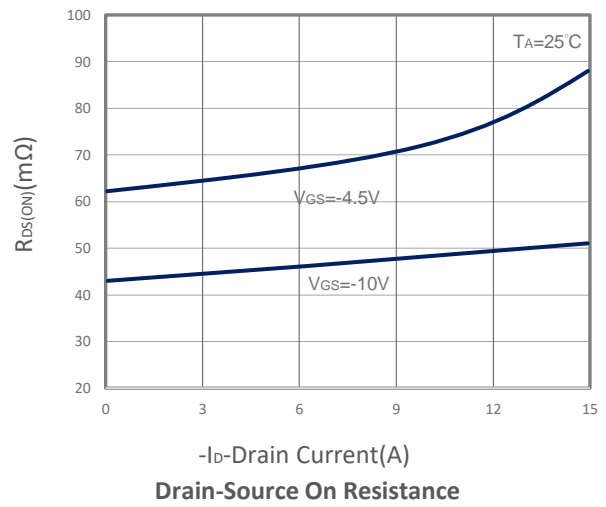
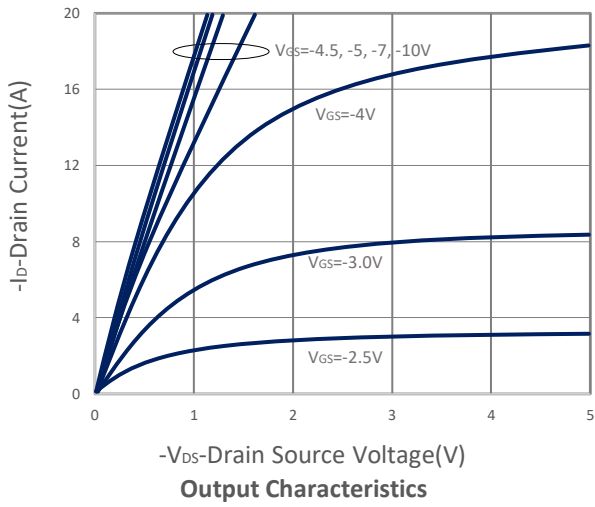
Symbol	Parameter	Condition	Min	Typ	Max	Unit
Static Parameters						
BV _{DSS}	Drain-Source Breakdown Voltage	V _{GS} =0V, I _D =-250 μ A	-30			V
V _{GS(th)}	Gate Threshold Voltage	V _{DS} =V _{GS} , I _D =-250 μ A	-1	-1.6	-2.5	V
I _{GSS}	Gate Leakage Current	V _{DS} =0V, V _{GS} = \pm 20V			\pm 100	nA
I _{DSS}	Zero Gate Voltage Drain Current	V _{DS} =-30V, V _{GS} =0V, T _J =25 $^\circ$ C			-1	μ A
		V _{DS} =-24V, V _{GS} =0V, T _J =75 $^\circ$ C			-10	
R _{DS(ON)}	Drain-source On-Resistance ^D	V _{GS} =-10V, I _D =-5A		46	52	m Ω
		V _{GS} =-4.5V, I _D =-3.6A		65	75	
G _{fs}	Forward Transconductance	V _{DS} =-10V, I _D =-5A		17		S
Diode Characteristics						
V _{SD}	Diode Forward Voltage ^D	I _S =-1A, V _{GS} =0V		-0.7	-1	V
I _S	Continuous Source Current				-2.5	A
Dynamic and Switching Parameters						
Q _g	Total Gate Charge (10V)	V _{DS} =-15V, V _{GS} =-10V, I _D =-5A		12.6	17.6	nC
Q _g	Total Gate Charge (4.5V)			6.3	8.8	
Q _{gs}	Gate-Source Charge			2.1	2.9	
Q _{gd}	Gate-Drain Charge			2.3	3.2	
C _{iss}	Input Capacitance	V _{DS} =-15V, V _{GS} =0V, f=1MHz		512	717	pF
C _{oss}	Output Capacitance			52	73	
C _{rss}	Reverse Transfer Capacitance			43	60	
t _{d(on)}	Turn-On Time	V _{DD} =-15V, V _{GEN} =-10V, R _G =3.3 Ω , I _D =-1A		7.5	14	nS
t _r				10	19	
t _{d(off)}	Turn-Off Time			16	30	
t _f				6	11	

Note: Absolute maximum ratings are those values beyond which the device could be permanently damaged.

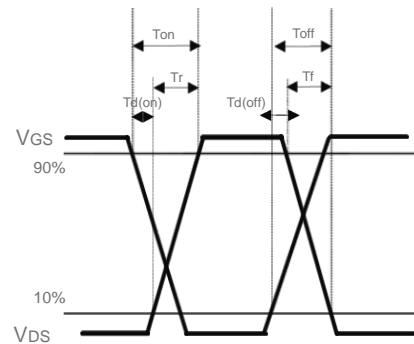
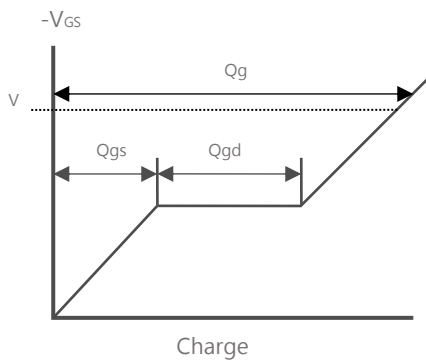
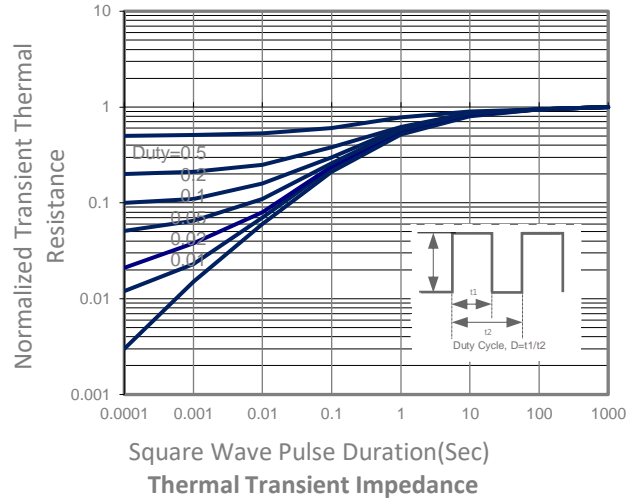
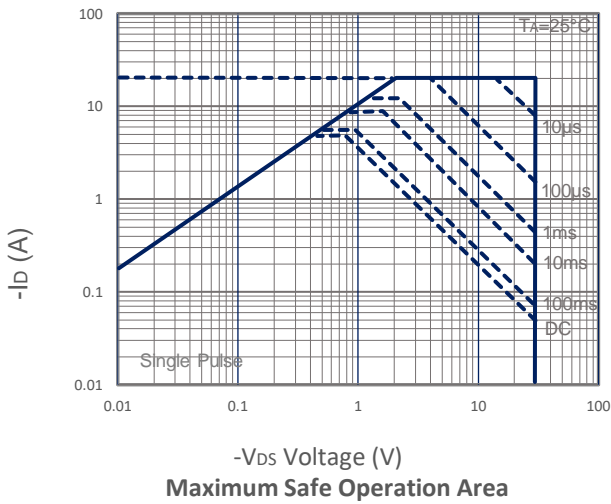
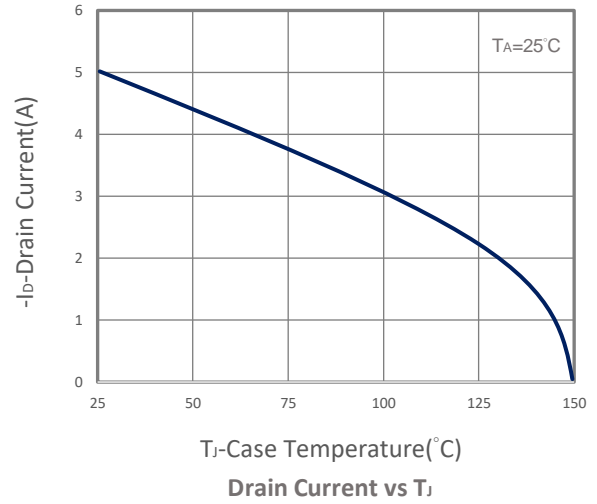
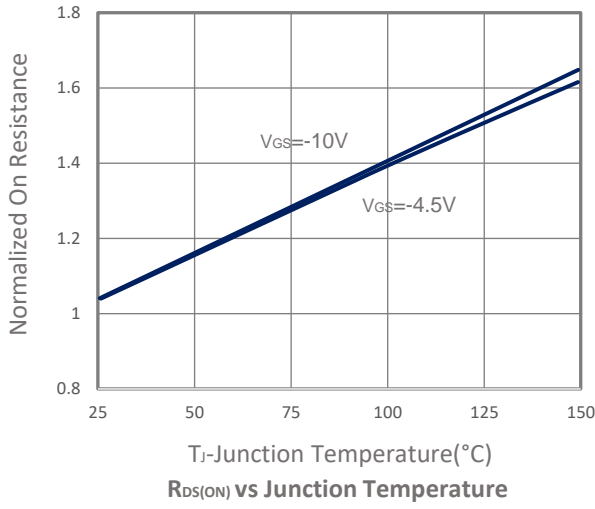
- Pulsed width limited by maximum junction temperature, T_{J(MAX)}=150 $^\circ$ C.
- Measure the value in a still air environment at T_A=25 $^\circ$ C, using an installation mounted on a 1 in2 FR-4 board, maximum junction temperature T_{J(MAX)}=150 $^\circ$ C.
- T_{J(MAX)}=150 $^\circ$ C, using junction-to-case thermal resistance (R_{θJC}) is more useful in additional heat sinking is used.
- The pulse test width is \leq 300 μ s and the duty cycle \leq 2%.

The products and product specifications contained herein are subject to change without notice to improve performance characteristics. Consult us, or our representatives before use, to confirm that the information in this datasheet is up to date. We assume no responsibility for any infringement of patents, patent rights, or other rights arising from the use of any information and circuitry in this datasheet.

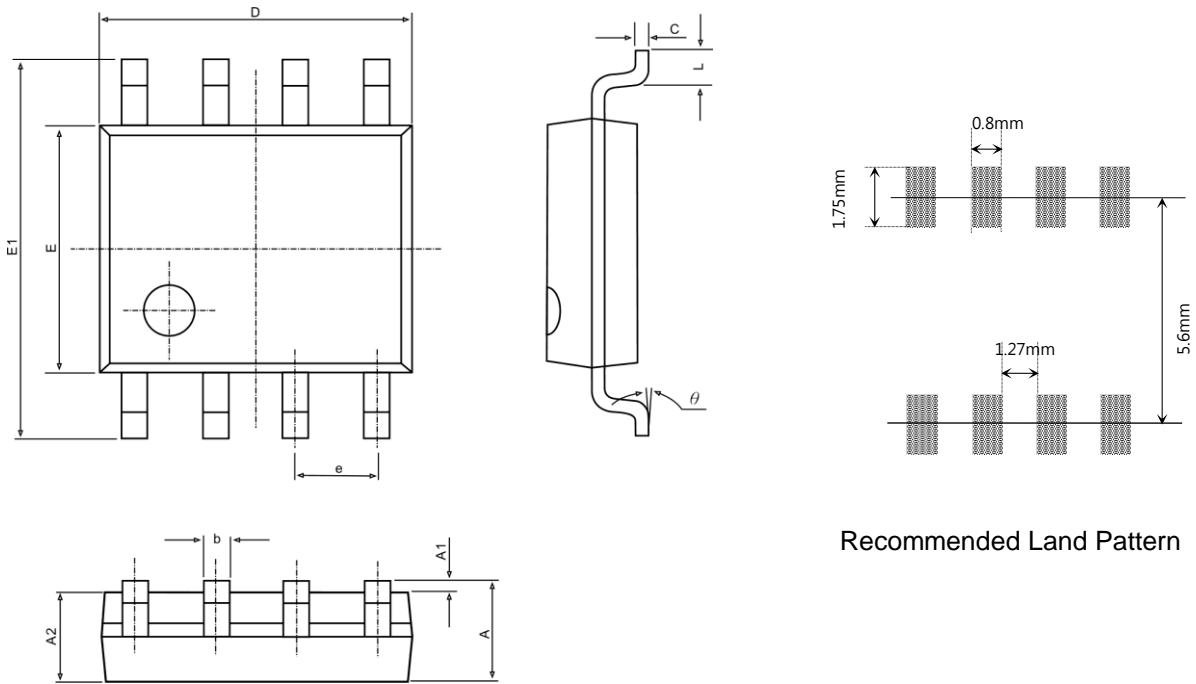
TYPICAL CHARACTERISTICS



TYPICAL CHARACTERISTICS



■ SOP-8 PACKAGE DIMENSIONS



Recommended Land Pattern

Symbol	Dimensions In Millimeters		Dimensions In Inches	
	Min.	Max.	Min.	Max.
A	1.350	1.750	0.053	0.069
A1	0.100	0.250	0.040	0.010
A2	1.350	1.550	0.053	0.061
b	0.330	0.510	0.130	0.020
c	0.170	0.250	0.006	0.010
D	4.700	5.100	0.185	0.200
E	3.800	4.000	0.150	0.157
E1	5.800	6.200	0.228	0.244
e	1.270BSC.		0.050BSC.	
L	0.400	1.270	0.016	0.005
θ	0°	8°	0°	8°